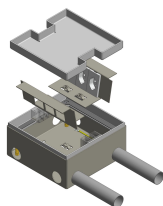




System overview

Residential junction box WAK 214/100



Floor box WAK 214mm made of stainless steel. For installation kits with sockets FLF standing, bticino as well as Legrand Mosaic (LM) Due to its size and robustness, the WAK 214 is perfectly suitable in residential or commercial premises.

Components



51083 - Installation kit 2FLF horizontal empty WAK 214

made of galvanized sheet steel, color: RAL 7032 pebble gray
max. 2 per plenum box
to WAK 214/77, WAK 214/100



51082 - Installation kit 3FLF vertical empty WAK 214

made of galvanized sheet steel, color: RAL 7032 pebble gray
max. 2 per plenum box
to WAK 214/100



51073 - Pull box WAK 214/100 AI

Housing made of galvanized and coated sheet steel
with frame and cover made of aluminum 3mm
edge height 22mm
with 2 cable trays
floor height 100-115mm



51091 - Brass lid with rim WAK 214 KM

Made of brass 3mm
edge height 22mm
for 2 cable trays



51090 - Cover Aluminium WAK214

Made of Aluminium 3mm
edge height 22mm
for 2 cable trays





System overview

Residential junction box WAK 214/100



51072 - Connecting box WAK 214/100 CR KM

Housing made of galvanized and coated sheet steel
with frame and cover made of chrome steel V2A 3mm
edge height 22mm
with 2 cable trays
floor height 100-115mm



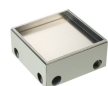
51074 - Pull box WAK 214/100 Ms

Galvanized and coated sheet steel housing
with brass 3mm frame and cover
edge height 22mm
with 2 cable trays
floor height 100-115mm



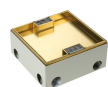
51070 - Connecting box WAK 214/100 AL KM

Housing made of galvanized and coated sheet steel
with frame and cover made of aluminum 3mm
edge height 22mm
with 2 cable trays
floor height 100-115mm



51075 - Pull box WAK 214/100 Cr

Housing made of galvanized and coated sheet steel
with frame and cover made of chrome steel V2A 3mm
edge height 22mm
with 2 cable trays
floor height 100-115mm



51071 - Plenum box WAK 214/100 Ms KM

Galvanized and coated sheet steel housing
with brass frame and cover
edge height 22mm
with 2 cable trays
floor height 100-115mm



51092 - Cr lid with rim for WAK 214 KM

Made of chrome steel 3mm
edge height 22mm
for 2 cable trays



51085 - Installation kit 3 module-LM empty WAK 214

for 3 modules type Legrand Mosaic 45x45mm
made of galvanized sheet steel, color: RAL 7032 pebble gray
max. 2 per junction box
to WAK 214/100





System overview

Residential junction box WAK 214/100

	51084 - Installation kit 6 module-BT empty WAK 214 for modules type bticino made of galvanized sheet steel, color: RAL 7032 pebble gray max. 2 per connection box to WAK 214/100	
	51087 - Al cover visible WAK 214 KM made of aluminum anodized 3mm , on wooden base with 2 cable trays.	
	51086 - Cr lid visible CTE 214 KM Made of chrome steel V2A 3mm, on wooden base with 2 cutouts for 2 cable trays	
	51099 - Al lid with rim WAK 214 BL made of aluminum 3mm with edge height 22mm with 2 brush strips	
	51101 - Cr lid with rim WAK 214 BL Made of chrome steel 3mm with edge height 22mm with 2 brush strips	
	51100 - Brass lid with rim WAK 214 BL Made of brass 3mm with edge height 22mm with 2 brush strips	
	51111 - Brush strip BAK22 / DAK22 / WAK 214 plastic black Dimension: 53x26mm Bristle length: 20mm	
	51085 - Installation kit 3 module-LM empty WAK 214 for 3 modules type Legrand Mosaic 45x45mm made of galvanized sheet steel, color: RAL 7032 pebble gray max. 2 per junction box to WAK 214/100	



System overview

Residential junction box WAK 214/100

	51086/ZUG - Cr lid visible WAK 214 ZUG Made of chrome steel V2A 3mm face side ground grain 220 glued to wood raw chipboard V100 for edge height 22mm	
	51095 - Cr lid with rim ZUG WAK 214 Made of stainless steel V2A 3mm edge height 22mm	
	51087/ZUG - Al lid visible WAK 214 ZUG made of aluminum anodized 3mm glued to wood raw chipboard V100 for edge height 22mm	
	51094 - Brass lid with rim ZUG WAK 214 Made of brass 3mm edge height 22mm	
	52067 - Lid lifter to cable traychrome steel 1.5 mm	
	51093 - Al lid with rim ZUG WAK 214 Made of aluminum 3mm edge height 22mm	