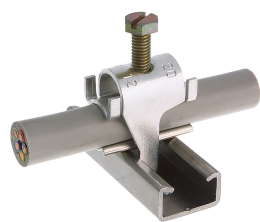




Product data sheet

43671 - Quick jig C20 40-48mm



made of aluminum alloy, hardened without cable support

Characteristics	
Eldas number	120115507
Base Unit	Piece
availability	available from stock
Packaging unit	50
Customs tariff number	761699
Technical data	
Dimensions length x width x height (mm)	56x64 mm
Clampable diameter (mm)	40-48 mm



Product data sheet

43671 - Quick jig C20 40-48mm

Product accessories



43659 - Cable support C20 40-48mm

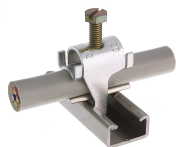
made of aluminum alloy, hardened



Product data sheet

43671 - Quick jig C20 40-48mm

Product systems



Quick installer aluminum alloy profile rail type C20



- Quick laying aluminum alloy for profile rail type C20.
 - With hexagon slotted screw.
 - For the laying of cables are always cable pads required
-