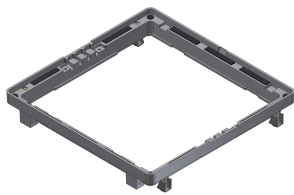




Product data sheet

52201 - Al frame DAK 8825 280x280 TSK



made of aluminum with protective edge

Characteristics	
Base Unit	Piece
availability	Delivery according to agreement
EAN Code	7611718229343
group	282000
Packaging unit	240
country of origin	CH
Weight (g)	515 g
Technical data	
Nominal mass	280x280



## **Product data sheet**

52201 - Al frame DAK 8825 280x280 TSK

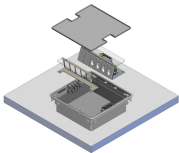
### **Product accessories**



Product data sheet

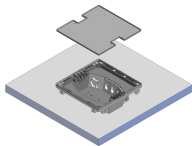
52201 - Al frame DAK 8825 280x280 TSK

Product systems



DAK 8825 280x280 square with built-in housing

Raised floor system DAK 8825 280x280 square with built-in housing.



DAK 8825 280x280 square with mounting tray

Raised floor system DAK 8825 280x280 square with built-in tray.

