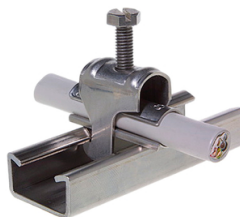




System overview

Quick stainless steel feeder type C30



Various stainless steel quick lay.

Components

	43231 - Cable fixing bracket C30 12-16mm stainless steel A4 for laying cables are always required cable pads.	
	43240 - Quick jig C30 70-80mm Niro A4 stainless steel quick installers are immer cable pads are required for cable installation	
	43232 - Cable fixing bracket C30 16-20mm A4 stainless steel quick installers are immer cable pads are required for cable installation	
	43230 - Quick installer C30 8-12mm Niro A4 stainless steel quick installers are always required cable pads for cable installation	
	43233 - Cable fixing bracket C30 20-25mm A4 stainless steel quick installers are immer cable pads are required for cable installation	
	43235 - Quick jig C30 32-40mm Niro A4 stainless steel quick installers are immer cable pads are required for cable installation	
	43236 - Cable fixing bracket C30 40-48mm A4 stainless steel quick installers are immer cable pads are required for cable installation	
	43239 - Quick jig C30 60-70mm Niro A4 stainless steel quick installers are immer cable pads are required for cable installation	



System overview

Quick stainless steel feeder type C30

	43237 - Cable fixing bracket C30 48-56mm null	
	43238 - Quick jig C30 56-64mm stainless steel A4 stainless steel quick installers are immer cable pads are required for cable installation	
	43241 - Quick jig C30 80-90mm stainless steel A4 stainless steel quick installers are immer cable pads are required for cable installation	
	43234 - Cable fixing bracket C30 25-32mm A4 stainless steel quick installers are immer cable pads are required for cable installation	
	4383IN/3M - Profile rail C30 stainless steel V2A 3 m Profile rail C30 with 32x18x3 mm made of stainless steel V2A, with a length of 3 m.	
	43235U - Baseplate C30 32-40mm of stainless steel A4	
	43239U - Cable support C30 60-70mm a4 stainless steel	
	43231U - Baseplate C30 12-16mm of stainless steel A4	
	43232U - Baseplate C30 16-20mm of stainless steel A4	
	43233U - Baseplate C30 20-25mm of stainless steel A4	
	43234U - Baseplate C30 25-32mm of stainless steel A4	
	43236U - Baseplate C30 40-48mm of stainless steel A4	



System overview

Quick stainless steel feeder type C30

	43237U - Baseplate C30 48-56mm of stainless steel A4	
	43238U - Baseplate C30 56-64mm of stainless steel A4	
	43240U - Cable support C30 70-80mm a4 stainless steel	
	43241U - Cable support C30 80-90mm a4 stainless steel	
	43230U - Baseplate C30 8-12mm of stainless steel A4	
	4382IN/3M - Profile rail C30 stainless steel V2A 3 m Profile rail C30 with 29x15x2 mm made of stainless steel V2A, with a length of 3 m.	