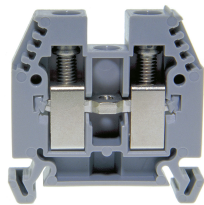




Product data sheet

3452/16GR - Terminal block DIN35 16mm² 45x11x42 mm gray



Terminal block DIN35 16mm² 45x11x42 mm gray with best possible contacting, stainless steel screws, 4-digit marking option on both sides, recessed for cross-connections

Characteristics	
Eldas number	158110537
Base Unit	Piece
availability	available from stock
EAN Code	7611718220197
group	165000
Packaging unit	25
country of origin	CH
Customs tariff number	8536.9080
Weight (g)	27 g
Color	gray
Technical data	
Dimensions length x width x height (mm)	45x11x42 mm
Dimensions length x width x height (inch)	1.77x0.43x1.65 inch
Cross section (mm²)	1,5 - 16 mm²
Nominal current (A)	76 A



Product data sheet

3452/16GR - Terminal block DIN35 16mm² 45x11x42 mm gray

Rated voltage (V)	1000 V
Connection type	Screw terminal
DIN rail type	DIN-35
Smallest connectable section (mm ²)	1,5 mm ²
Number of connection point	2
Number of floor	1
Number of potentials	1
Clamping screw M	M5 (M = 2.1Nm)
Central thread M	M4 (M = 1.5Nm)
Insulating material	PA66
Nominal Cross-section (mm ²)	16 mm ²
Stripping length mm (mm)	13 mm
conductors of the same cross-section per clamping point EN60947 (mm ²)	1x16 , 1x10 , 2x6 mm ²
Head reception room width x height (mm)	6.5x6.8 mm
Rating data according to UL 1059	
Rated voltage US (V)	600 V
Nominal cross section (AWG)	6 AWG
Cross-section (AWG)	4 - 14 AWG
Smallest connectable section (AWG)	16 AWG
Stripping length (inch)	0,51 inch
Tightening torque (lb-inch)	18,6 lb-inch



Product data sheet

3452/16GR - Terminal block DIN35 16mm² 45x11x42 mm gray

Product accessories



80071R - Test plug Ø M4 red, socket 4mm

plug and adaptor in one piece



80071S - Test plug Ø M4 black, socket 4mm

plug and adaptor in one piece



80070S - Test plug Ø M3 black, socket 4mm

plug and adaptor in one piece



2737R - Test plug Ø 2.8mm red, socket 4mm

connecting cable incl.



3957 - Marking strip 6x3mm unprinted white

Sales content with 100 tags per box



3464 - End barrier DIN-35 grey to 3452/6

End panel suitable for 3452/6, 3452/10, 3452/16



3465 - Partition DIN35 grey to 3452/6, 3452/10

Partition wall suitable for 3452/6, 3452/10 and 3452/16



3418 - Stopper DIN35 height 30mm

Makrolon locking piece



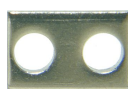
30370 - Stopper DIN35 height 23mm

Locking piece made of nickel-plated brass M3 screw



81541 - Cross connection bolt single M4 insulated (12.2 mm)

Cross connection bolt complete with spacer sleeve. 12.2 mm



81414L - Link to cross-connections

to terminals 16mm²



80049/16 - Warning plate for single terminal 16mm²

to series 345216



Product data sheet

3452/16GR - Terminal block DIN35 16mm² 45x11x42 mm gray



3868/4 - Cover for 4 terminals yellow

with black printing, to series 3427,345216



81441 - Sealing eyelet Ø 4.2mm

Sealing eyes



81541/2 - Cross-connection 2-pole to DIN32/35 16mm² terminal blocks

Insulated cross-connection 2-pole to terminal blocks DIN32/35 16mm² including screws M4.
Dimension: 20x29.8 mm



81541/3 - Cross-connection 3-pole to DIN32/35 16mm² terminal blocks

Insulated cross-connection 3-pole to terminal blocks DIN32/35 16mm² including screws M4.
Dimension: 31x29.8 mm



81541/4 - Cross-connection 4-pole to DIN32/35 16mm² terminal blocks

Insulated cross-connection 4-pole to terminal blocks DIN32/35 16mm² including screws M4.
Dimension: 42x29.8 mm



81541/5 - Cross-connection 5-pole to DIN32/35 16mm² terminal blocks

Insulated cross-connection 5-pole to terminal blocks DIN32/35 16mm² including screws M4.
Dimension: 53x29.8 mm



81541/10 - Cross-connection 10-pole to DIN32/35 16mm² terminal blocks

Insulated cross-connection 10-pole to DIN32/35 16mm² terminal blocks including M4 screws.
Dimension: 108x29.8 mm



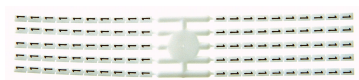
Bezeichnungskarte_6x12mm - Designation cards 6x12mm

Various designation labels 6x12mm with different embossing.



Bezeichnungskarte_6x9mm - Designation card 6x9mm

Various designation plates with different embossing.



Bezeichnungskarte_6x3mm - Designation card 6x3mm

Various designation plates with different embossing.



3868/5 - Cover for 5 terminals yellow

with black printing, to series 3427,345216



Product data sheet

3452/16GR - Terminal block DIN35 16mm² 45x11x42 mm gray



3868/6 - Cover for 6 terminals yellow

with black printing, to series 3427,345216



3868/7 - Cover for 7 terminals yellow

with black printing, to series 3427,345216



3868/8 - Cover for 8 terminals yellow

with black printing, to series 3427,345216



Product data sheet

3452/16GR - Terminal block DIN35 16mm² 45x11x42 mm gray

Product systems



Terminal blocks DIN35 2.5mm²-70mm²

DIN35 terminal blocks 2.5mm²-70mm² with best possible contacting, stainless steel screws, 4-digit marking option on both sides, recessed for cross-connections

