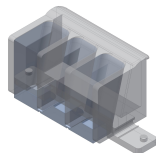




Product data sheet

80058 - Cable trough complete DAK22 / BAK22



made of polycarbonate crystal clear with transparent filling piece.

| Characteristics | |
|-----------------------|---------------------------------|
| Base Unit | Piece |
| availability | Delivery according to agreement |
| EAN Code | 7611718218200 |
| group | 282000 |
| Packaging unit | 1 |
| country of origin | CH |
| Customs tariff number | 3926.9000 |
| Weight (g) | 17 g |



Product data sheet

80058 - Cable trough complete DAK22 / BAK22

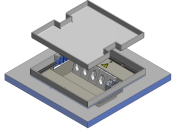
Product accessories



Product data sheet

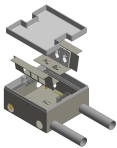
80058 - Cable trough complete DAK22 / BAK22

Product systems



DAK22 271x271 square

Raised floor system DAK22 271x271 square.



Residential junction box WAK 214/100

Floor box WAK 214mm made of stainless steel. For installation kits with sockets FLF standing, bticino as well as Legrand Mosaic (LM) Due to its size and robustness, the WAK 214 is perfectly suitable in residential or commercial premises.



Floor junction box BAK22 to slab formwork

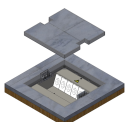
Plenum box BAK22 for fastening to the slab formwork.

The installation of underfloor ducts requires a minimum height of the concrete overlay (60 mm). If this height is not available, special boxes can be obtained for concreting into the raw slab. After fastening to the formwork, they are connected to each other with underfloor trunking 200 x 40, covered with the temporary protective cover and cast in the concrete up to the top edge.

The installation kit is mounted on the levelable box insert; the opening between the box bottom and the installation plate allows the cable to pass through to the next box. After finished wiring, an aluminum cover with cable trough is attached.

Connection box consisting of:

- Enclosure with adjustable feet, with four side openings 202 x 42 mm and a bottom entry tube M50 with temporary one-way steel cover incl. 4 screws
- Enclosure insert made of aluminum, with frame 278 x 278
- Al cover with edge 22 mm
- 2 cable trays made of polycarbonate crystal clear with transparent filler piece



DAK22 levelable 271x271 square

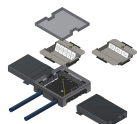
Raised floor system DAK22 271x271 square, with levelable covering height





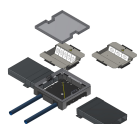
Product data sheet

80058 - Cable trough complete DAK22 / BAK22



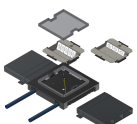
Floor junction box BAK22 200x40

Underfloor system with square plenum box and chrome steel and aluminum junction boxes, edge height 22mm for UFK 200x40 underfloor duct.



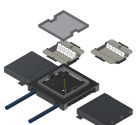
Floor junction box BAK22 200x50

Underfloor system with square plenum box and chrome steel and aluminum junction boxes, edge height 22mm for UFK 200x50 underfloor duct.



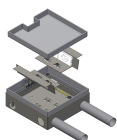
Floor junction box BAK22 300x40

Underfloor system with square plenum box and chrome steel and aluminum junction boxes, edge height 22mm for UFK 300x40 underfloor duct.



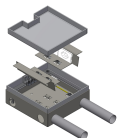
Floor junction box BAK22 300x50

Underfloor system with square plenum box and chrome steel and aluminum junction boxes, edge height 22mm for UFK 300x50 underfloor duct.



Residential junction box WAK 214/77

Floor box WAK 214mm made of stainless steel. For installation kits with sockets FLF horizontal. Due to its size and robustness WAK 214 is perfectly suitable in residential or commercial premises.



Residential junction box WAK 214/77

