



Product data sheet

4382A/3M - Aluminum alloy profile rail C30 3 m



Profile rail C30 with 29x15x2 mm made of aluminum alloy, with a length of 3 m.

| Characteristics | |
|-----------------------|---------------------|
| Eldas number | 168018239 |
| Base Unit | Meter |
| availability | Delivery in 4 weeks |
| EAN Code | 7611718247842 |
| group | 171000 |
| Packaging unit | 3 |
| country of origin | CH |
| Customs tariff number | 7604.2900 |
| Weight (g) | 330 g |



Product data sheet

4382A/3M - Aluminum alloy profile rail C30 3 m

Product accessories



4398 - Cable clamp for 1 cable 22-31mm

Cable clamp black to screw on, two-piece, for 1 cable, 2 screws. Threaded bolt is M6x50.



4398A - Cable clamp for 2 cables 22-31mm

Cable clamp black to screw on, 4-piece, for 2 cables side by side, 2 screws. Threaded bolt is M6x110.



Product data sheet

4382A/3M - Aluminum alloy profile rail C30 3 m

Product systems



Cable clamps for insertion in profile rails



- made of impact-resistant Duroplast, black
- for insertion in profile rails no. 4382 and 4383
- with threaded bolt made of galvanized steel
- with welded slot nut
- handling like quick fit

Sliding blocks made of galvanized steel type C30



available in three versions:

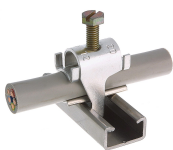
- with screw, with spring
- without screw, with spring
- without screw, without spring
- Fits profile rails no. 4382, 4383 and 80291, type C30



Profile rails C20 and C30



Various profile rails C20/C30 made of aluminum and steel VA2, against calculation of a cutting surcharge the profile rails can be delivered in any desired length. For embedding in concrete, the profile rails are available, also against calculation, with fixing holes or with slings.



Quick installer aluminum alloy for profile rail type C30



Aluminum alloy quick lay for profile rails type C30.