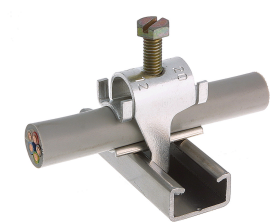




Product data sheet

43695 - Cable fixing bracket C20 8-12mm



made of aluminum alloy, hardened without cable support




Characteristics	
Eldas number	120110307
Base Unit	Piece
availability	available from stock
EAN Code	7611718202957
group	171000
Packaging unit	100
country of origin	CH
Customs tariff number	761699
Weight (g)	779 g
Technical data	
Dimensions length x width x height (mm)	17x25mm mm
Material	Aluminum
Clampable diameter (mm)	8-12 mm



Product data sheet

43695 - Cable fixing bracket C20 8-12mm

Product accessories

	<b>43663 - Baseplate C20 8-12mm</b> of hardened aluminium alloy
	<b>43671 - Quick jig C20 40-48mm</b> made of aluminum alloy, hardened without cable support
	<b>43659 - Cable support C20 40-48mm</b> made of aluminum alloy, hardened

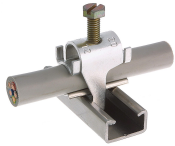


## Product data sheet

43695 - Cable fixing bracket C20 8-12mm

### Product systems

---



#### Quick installer aluminum alloy profile rail type C20



- Quick laying aluminum alloy for profile rail type C20.
  - With hexagon slotted screw.
  - For the laying of cables are always cable pads required
-