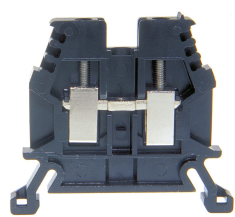




Product data sheet

30150SW - Terminal block DIN35 2.5mm² black



Characteristics	
Eldas number	158100117
Base Unit	Piece
availability	Delivery in 4 weeks
EAN Code	7611718201059
group	165000
Packaging unit	50
country of origin	CH
Customs tariff number	8536.9080
Weight (g)	7 g
Color	black
Technical data	
Dimensions length x width x height (mm)	45x5x36 mm
Dimensions length x width x height (inch)	1.77x0.20x1.41 inch
Cross section (mm²)	0,5 - 2,5 mm²
Nominal current (A)	24 A



Product data sheet

30150SW - Terminal block DIN35 2.5mm² black

Rated voltage (V)	1000 V
Connection type	Screw terminal
DIN rail type	DIN-35
Smallest connectable section (mm ²)	0,5 mm ²
Number of connection point	2
Number of floor	1
Number of potentials	1
Clamping screw M	M2.5 (M = 0.6Nm)
Central thread M	M2.5 (M = 0.6Nm)
Insulating material	PA66
Nominal Cross-section (mm ²)	2,5 mm ²
Stripping length mm (mm)	10 mm
conductors of the same cross-section per clamping point EN60947 (mm ²)	2x1, 2x1.5, 2x2.5 mm ²
Head reception room width x height (mm)	2.4x5.2 mm
Rating data according to UL 1059	
Rated voltage US (V)	600 V
Nominal cross section (AWG)	14 AWG
Cross-section (AWG)	14 - 20 AWG
Smallest connectable section (AWG)	22 AWG
Stripping length (inch)	0,39 inch
Tightening torque (lb-inch)	5,3 lb-inch



Product data sheet

30150SW - Terminal block DIN35 2.5mm² black

Product accessories



80247 - Test plug Ø 2.3mm red, socket 4mm
connecting cable incl.



80248 - Test plug Ø 2.3mm black, socket 4mm
connecting cable incl.



3460 - End barrier DIN35 grey to 3450, 30150
End wall suitable for 3450, 30150



3461 - Partition DIN35 grey to 30150,3450
Partition wall suitable for 30150, 3450, 30800, 30800P



80256 - Push-in barrier DIN35 to 30150, 3450
white



3418 - Stopper DIN35 height 30mm
Makrolon locking piece



30370 - Stopper DIN35 height 23mm
Locking piece made of nickel-plated brass M3 screw



81505/2 - Cross-connection 2-pole to DIN35/32 2.5mm² terminal blocks
Insulated cross-connection 2-pole to DIN32/35 terminal blocks including M2.5 screws.
Dimension: 9.1x18.8mm.



81505 - Cross connection bolt single M2.5 insulated (10.6mm)
Cross connection bolt complete with spacer sleeve. 10.6 mm



30408 - Link to cross-connections
to terminals 2.5mm 2



30790 - Cross-junction rack 10pole grey 5mm
Cross-connection rake made of nickel-plated brass, for terminal blocks 2.5mm² with 5mm pitch



Product data sheet

30150SW - Terminal block DIN35 2.5mm² black



81401/4 - Cover for 4 terminals yellow

with black marking, to series 30150, 30903, 30973, 30860



81440 - Sealing eyelet Ø 3.2mm

Sealing eyes



30421 - Cover strip for double level and terminal blocks 9.5mm, length 280mm

Cover strip for double level and terminal blocks DIN32/35 9.5mm , length 280mm



81505/3 - Cross-connection 3-pole to terminal blocks DIN32/35 2.5mm²

Insulated cross-connection 3-pole to DIN32/35 terminal blocks including M2 screws.
Dimension: 5.14.2x18.8mm.



81505/4 - Cross-connection 4-pole to terminal blocks DIN32/35 2.5mm²

Insulated cross-connection 4-pole to terminal blocks DIN32/35 2.5mm² including screws M2.5. dimension: 19.3x18.8mm.



81505/5 - Cross-connection 5-pole to DIN32/35 2.5mm² terminal blocks

Insulated cross-connections 5-pole to DIN32/35 terminal blocks including M2.5 screws.
Dimension: 24.4x18.8mm.



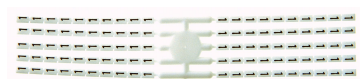
81505/10 - Cross-connection 10-pole to DIN32/35 2.5mm² terminal blocks

Insulated cross-connection 10-pole to terminal blocks DIN32/35 2.5mm² including screws M2.5. dimension: 49.7x18.8mm.



Bezeichnungskarte_5x5mm - Designation card 5x5mm

Various designation plates with different embossing.



Bezeichnungskarte_5x3mm - Designation card 5x3mm

Various designation plates with different embossing.



Bezeichnungskarte_5x9mm - Designation card 5x9mm

Various designation plates with different embossing.



Bezeichnungskarte_5x12mm - Designation card 5x12mm

Various designation plates



81401/5 - Cover for 5 terminals yellow

with black marking, to series 30150, 30903, 30973, 30860



Product data sheet

30150SW - Terminal block DIN35 2.5mm² black



81401/6 - Cover for 6 terminals yellow

with black marking, to series 30150, 30903, 30973, 30860



81401/7 - Cover for 7 terminals yellow

with black marking, to series 30150, 30903, 30973, 30860



81401/8 - Cover for 8 terminals yellow

with black marking, to series 30150, 30903, 30973, 30860



Product data sheet

30150SW - Terminal block DIN35 2.5mm² black

Product systems



Terminal blocks DIN35 2.5mm²-70mm²

DIN35 terminal blocks 2.5mm²-70mm² with best possible contacting, stainless steel screws, 4-digit marking option on both sides, recessed for cross-connections

