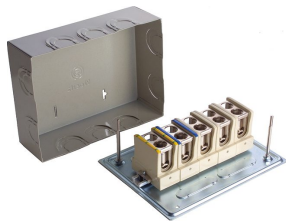




Product data sheet

2165/3468 - Junction box, 200x150 mm, 5x70 mm²



Base plate and cover made of sheet metal with polyamide branch terminals 3P N PE

| Characteristics | |
|---|----------------------|
| Eldas number | 150445137 |
| Base Unit | Piece |
| availability | Delivery in 4 weeks |
| EAN Code | 7611718203770 |
| group | 167000 |
| Packaging unit | 1 |
| country of origin | CH |
| Customs tariff number | 8536.9080 |
| Weight (g) | 3900 g |
| Technical data | |
| Dimensions length x width x height (mm) | 200x150x67 mm |
| Dimensions width x height (mm) | mm |
| Cross section (mm ²) | 5x70 mm ² |



Product data sheet

2165/3468 - Junction box, 200x150 mm, 5x70 mm²

Product accessories



Product data sheet

2165/3468 - Junction box, 200x150 mm, 5x70 mm²

Product systems



Junction boxes with base plate and cover made of sheet metal for 5x70mm²

- 5x70 mm²

