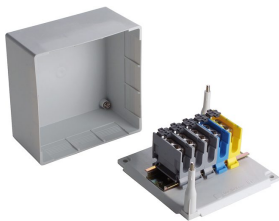




System overview

Junction boxes with base plate and cover made of thermoplastic for 5x2.5/5x6/5x10 mm<sup>2</sup>



- 5x2.5 mm<sup>2</sup>

Components

	<b>2068K - Junction box, 95x95mm, empty</b> Base plate and lid made of thermoplastic, light gray, without rail	
	<b>2069K - Junction box, 78x78mm, empty</b> Base plate and lid made of thermoplastic, light gray, without rail	
	<b>2070K - Junction box, 115x115mm, empty</b> Base plate and lid made of thermoplastic, light gray, without rail	
	<b>2078K - Junction box, 95x95mm, rail DIN35</b> Base plate and cover made of thermoplastic, light gray, with rail, without clamps	
	<b>2079K - Junction box, 78x78mm, rail DIN35</b> Base plate and cover made of thermoplastic, light gray, with rail, without clamps	
	<b>2080K - Junction box, 115x115mm, rail DIN35</b> Base plate and cover made of thermoplastic, light gray, with rail, without clamps	
	<b>2094/5K - Junction box, 78x78mm, 5x2.5mm<sup>2</sup></b> Base plate and cover made of thermoplastic, light gray, with terminals 3P N PE	
	<b>2185K - Junction box, 95x95mm, 5x6mm<sup>2</sup></b> Base plate and cover made of thermoplastic, light gray, with terminals 3P N PE	
	<b>2115K - Junction box, 115x115mm, 5x10mm<sup>2</sup></b> Base plate and cover made of thermoplastic, light gray, with terminals 3P N PE	