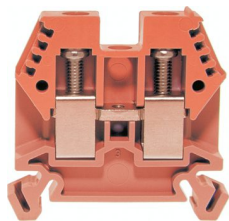




Product data sheet

3452/10RO - Terminal block DIN35 10mm² red



Characteristics	
Base Unit	Piece
availability	Delivery according to agreement
EAN Code	7611718253539
group	165000
Packaging unit	50
country of origin	CH
Customs tariff number	8536.9080
Weight (g)	20 g
Color	red
Technical data	
Dimensions length x width x height (mm)	45x8x42 mm
Dimensions length x width x height (inch)	1.77x0.32x1.65 inch
Cross section (mm²)	1 - 10 mm²
Nominal current (A)	57 A
Rated voltage (V)	1000 V



## Product data sheet

### 3452/10RO - Terminal block DIN35 10mm<sup>2</sup> red

Connection type	Screw terminal
DIN rail type	DIN-35
Smallest connectable section (mm <sup>2</sup> )	1 mm <sup>2</sup>
Number of connection point	2
Number of floor	1
Number of potentials	1
Clamping screw M	M4 (M = 1.5Nm)
Central thread M	M3 (M = 0.7Nm)
Insulating material	PA66
Nominal Cross-section (mm <sup>2</sup> )	10 mm <sup>2</sup>
Stripping length mm (mm)	13 mm
conductors of the same cross-section per clamping point EN60947 (mm <sup>2</sup> )	1x10 , 2x6 , 2x4 mm <sup>2</sup>
Head reception room width x height (mm)	4.8x5.2 mm
<b>Rating data according to UL 1059</b>	
Rated voltage US (V)	600 V
Nominal cross section (AWG)	8 AWG
Cross-section (AWG)	8 - 18 AWG
Smallest connectable section (AWG)	18 AWG
Stripping length (inch)	0,51 inch
Tightening torque (lb-inch)	13,27 lb-inch



## Product data sheet

3452/10RO - Terminal block DIN35 10mm<sup>2</sup> red

### Product accessories



**80070R - Test plug Ø M3 red, socket 4mm**

plug and adaptor in one piece



**2737R - Test plug Ø 2.8mm red, socket 4mm**

connecting cable incl.



**80070S - Test plug Ø M3 black, socket 4mm**

plug and adaptor in one piece



**2737S - Test plug Ø 2.8mm black, socket 4mm**

connecting cable incl.



**3957 - Marking strip 6x3mm unprinted white**

Sales content with 100 tags per box



**3464 - End barrier DIN-35 grey to 3452/6**

End panel suitable for 3452/6, 3452/10, 3452/16



**3465 - Partition DIN35 grey to 3452/6, 3452/10**

Partition wall suitable for 3452/6, 3452/10 and 3452/16



**3418 - Stopper DIN35 height 30mm**

Makrolon locking piece



**30370 - Stopper DIN35 height 23mm**

Locking piece made of nickel-plated brass M3 screw



**81508/2 - Cross-connection 2-pole to DIN32/35 10mm<sup>2</sup> terminal blocks**

Insulated cross-connection 2-pole to DIN32/35 10mm<sup>2</sup> terminal blocks including M3 screws.  
Dimension: 15.4x26.8 mm



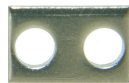
**81549 - Cross connection bolt single M3 insulated (13.5 mm)**

Cross connection bolt complete with spacer sleeve. 13.5 mm



## Product data sheet

3452/10RO - Terminal block DIN35 10mm<sup>2</sup> red



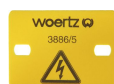
### 81412L - Link to cross-connections

to terminals 6 und 10mm 2



### 80049/10 - Warning plate for single terminal 10mm<sup>2</sup>

to series 345210



### 3887/4 - Cover for 4 terminals yellow

with black printing, to series 3425,345210



### 81440 - Sealing eyelet Ø 3.2mm

Sealing eyes



### 3512 - Sealing screw M3x25 of polyamide

Sealing screw spring-loaded test probes, several numbers of poles can be lined up



### 30422 - Cover strip for terminal blocks 9.5mm, length 280mm

Cover strip for terminal blocks DIN32/35 9.5mm , length 280mm



### 81508/3 - Cross-connection 3-pole to DIN32/35 10mm<sup>2</sup> terminal blocks

Insulated cross-connection 3-pole to DIN32/35 10mm<sup>2</sup> terminal blocks including M3 screws.  
Dimension: 23.5x26.8 mm



### 81508/4 - Cross-connection 4-pole to DIN32/35 10mm<sup>2</sup> terminal blocks

Insulated cross-connection 4-pole to DIN32/35 10mm<sup>2</sup> terminal blocks including M3 screws.  
Dimension: 31.6x26.8 mm



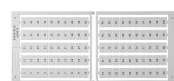
### 81508/5 - Cross-connection 5-pole to terminals DIN32/35 10mm<sup>2</sup>

Insulated cross-connection 5-pole to terminals DIN32/35 10mm<sup>2</sup> including screws M3.  
Dimension: 39.7x26.8 mm



### 81508/10 - Cross-connection 10-pole to DIN32/35 10mm<sup>2</sup> terminal blocks

Insulated cross-connection 10-pole to DIN32/35 10mm<sup>2</sup> terminal blocks including M3 screws.  
Dimension: 80.2x26.8 mm



### Bezeichnungskarte\_6x12mm - Designation cards 6x12mm

Various designation labels 6x12mm with different embossing.



### Bezeichnungskarte\_6x9mm - Designation card 6x9mm

Various designation plates with different embossing.



Product data sheet

3452/10RO - Terminal block DIN35 10mm<sup>2</sup> red



**Bezeichnungskarte\_6x3mm - Designation card 6x3mm**

Various designation plates with different embossing.



**3887/5 - Cover for 5 terminals yellow**

with black printing, to series 3425,345210



**3887/6 - Cover for 6 terminals yellow**

with black printing, to series 3425,345210



**3887/7 - Cover for 7 terminals yellow**

with black printing, to series 3425,345210



**3887/8 - Cover for 8 terminals yellow**

with black printing, to series 3425,345210



## Product data sheet

3452/10RO - Terminal block DIN35 10mm<sup>2</sup> red

### Product systems

---



#### Terminal blocks DIN35 2.5mm<sup>2</sup>-70mm<sup>2</sup>

DIN35 terminal blocks 2.5mm<sup>2</sup>-70mm<sup>2</sup> with best possible contacting, stainless steel screws, 4-digit marking option on both sides, recessed for cross-connections

