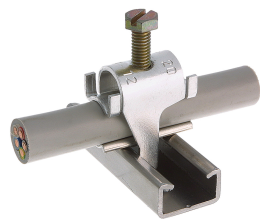




Product data sheet

43627 - Cable fixing bracket C20 16-20mm



made of aluminum alloy, hardened without cable support

Characteristics	
Eldas number	120111307
Base Unit	Piece
availability	Delivery in 4 weeks
EAN Code	7611718207044
group	171000
Packaging unit	100
country of origin	CH
Customs tariff number	761699
Weight (g)	18 g
Technical data	
Dimensions length x width x height (mm)	26x34 mm
Material	Aluminum
Clampable diameter (mm)	16-20 mm



## Product data sheet

43627 - Cable fixing bracket C20 16-20mm

### Product accessories

---



**43665 - Baseplate C20 16-20mm**

of hardened aluminium alloy

---

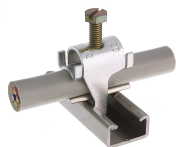


## Product data sheet

43627 - Cable fixing bracket C20 16-20mm

### Product systems

---



#### Quick installer aluminum alloy profile rail type C20



- Quick laying aluminum alloy for profile rail type C20.
  - With hexagon slotted screw.
  - For the laying of cables are always cable pads required
-