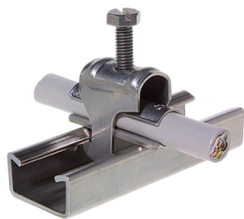




Product data sheet

43241 - Quick jig C30 80-90mm stainless steel



A4 stainless steel quick installers are immer cable pads are required for cable installation

Characteristics	
Eldas number	120127627
Base Unit	Piece
availability	available from stock
Packaging unit	25
Customs tariff number	8302.4990
Technical data	
Dimensions length x width x height (mm)	98x60 mm
Material	Stainless steel
Clampable diameter (mm)	80-90 mm



Product data sheet

43241 - Quick jig C30 80-90mm stainless steel

Product accessories



43241U - Cable support C30 80-90mm

a4 stainless steel



Product data sheet

43241 - Quick jig C30 80-90mm stainless steel

Product systems



Quick stainless steel feeder type C30

Various stainless steel quick lay.

