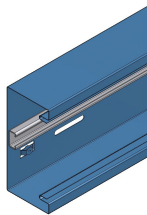




Product data sheet

53344 - Duct tray FnW BRK 4670/182x85



made of galvanized steel sheet with anchor rail 29x15x2mm
Color: at choice
Length: 2000mm

Characteristics	
Base Unit	Piece
availability	Delivery according to agreement
group	999000
country of origin	CH
Customs tariff number	7308.9000
Technical data	
Nominal mass	182x85



Product data sheet

53344 - Duct tray FnW BRK 4670/182x85

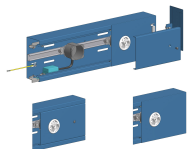
Product accessories



Product data sheet

53344 - Duct tray FnW BRK 4670/182x85

Product systems



Parapet trunking system BRK 4670 182x85

Parapet channel 4670 182x85 mm - With stable anchor rail C30 for fastening with slot nut. - Made of galvanized sheet steel. Openings at the front.

