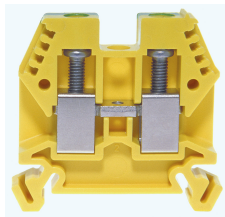




Product data sheet

3452/10E - Terminal block DIN35 10mm² green yellow insulated



Terminal blocks with the best possible contact. Dimension: 45x8x42mm. Stainless steel screws, 4-digit marking option on both sides, countersunk for cross-connections

Characteristics	
Eldas number	158110467
Base Unit	Piece
availability	Delivery according to agreement
EAN Code	7611718205781
group	165000
Packaging unit	50
country of origin	CH
Customs tariff number	8536.9080
Weight (g)	20 g
Color	green/yellow
Technical data	
Dimensions length x width x height (mm)	45x8x42 mm
Dimensions length x width x height (inch)	1.77x0.32x1.65 inch
Cross section (mm²)	1 - 10 mm²
Nominal current (A)	57 A



Product data sheet

3452/10E - Terminal block DIN35 10mm² green yellow insulated

Rated voltage (V)	1000 V
Connection type	Screw terminal
DIN rail type	DIN-35
Smallest connectable section (mm ²)	1 mm ²
Number of connection point	2
Number of floor	1
Number of potentials	1
Clamping screw M	M4 (M = 1.5Nm)
Central thread M	M3 (M = 0.7Nm)
Insulating material	PA66
Nominal Cross-section (mm ²)	10 mm ²
Stripping length mm (mm)	13 mm
conductors of the same cross-section per clamping point EN60947 (mm ²)	1x10 , 2x6 , 2x4 mm ²
Head reception room width x height (mm)	4.8x5.2 mm
Rating data according to UL 1059	
Rated voltage US (V)	600 V
Nominal cross section (AWG)	8 AWG
Cross-section (AWG)	8 - 18 AWG
Smallest connectable section (AWG)	18 AWG
Stripping length (inch)	0,51 inch
Tightening torque (lb-inch)	13,27 lb-inch



Product data sheet

3452/10E - Terminal block DIN35 10mm² green yellow insulated

Product accessories



80070R - Test plug Ø M3 red, socket 4mm

plug and adaptor in one piece



2737R - Test plug Ø 2.8mm red, socket 4mm

connecting cable incl.



80070S - Test plug Ø M3 black, socket 4mm

plug and adaptor in one piece



2737S - Test plug Ø 2.8mm black, socket 4mm

connecting cable incl.



3957 - Marking strip 6x3mm unprinted white

Sales content with 100 tags per box



3464 - End barrier DIN-35 grey to 3452/6

End panel suitable for 3452/6, 3452/10, 3452/16



3465 - Partition DIN35 grey to 3452/6, 3452/10

Partition wall suitable for 3452/6, 3452/10 and 3452/16



3418 - Stopper DIN35 height 30mm

Makrolon locking piece



30370 - Stopper DIN35 height 23mm

Locking piece made of nickel-plated brass M3 screw



81508/2 - Cross-connection 2-pole to DIN32/35 10mm² terminal blocks

Insulated cross-connection 2-pole to DIN32/35 10mm² terminal blocks including M3 screws.
Dimension: 15.4x26.8 mm



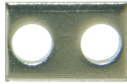
81549 - Cross connection bolt single M3 insulated (13.5 mm)

Cross connection bolt complete with spacer sleeve. 13.5 mm



Product data sheet

3452/10E - Terminal block DIN35 10mm² green yellow insulated



81412L - Link to cross-connections

to terminals 6 und 10mm 2



80049/10 - Warning plate for single terminal 10mm²

to series 345210



3887/4 - Cover for 4 terminals yellow

with black printing, to series 3425,345210



81440 - Sealing eyelet Ø 3.2mm

Sealing eyes



3512 - Sealing screw M3x25 of polyamide

Sealing screw spring-loaded test probes, several numbers of poles can be lined up



30422 - Cover strip for terminal blocks 9.5mm, length 280mm

Cover strip for terminal blocks DIN32/35 9.5mm , length 280mm



81508/3 - Cross-connection 3-pole to DIN32/35 10mm² terminal blocks

Insulated cross-connection 3-pole to DIN32/35 10mm² terminal blocks including M3 screws.
Dimension: 23.5x26.8 mm



81508/4 - Cross-connection 4-pole to DIN32/35 10mm² terminal blocks

Insulated cross-connection 4-pole to DIN32/35 10mm² terminal blocks including M3 screws.
Dimension: 31.6x26.8 mm



81508/5 - Cross-connection 5-pole to terminals DIN32/35 10mm²

Insulated cross-connection 5-pole to terminals DIN32/35 10mm² including screws M3.
Dimension: 39.7x26.8 mm



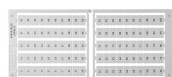
81508/10 - Cross-connection 10-pole to DIN32/35 10mm² terminal blocks

Insulated cross-connection 10-pole to DIN32/35 10mm² terminal blocks including M3 screws.
Dimension: 80.2x26.8 mm



Bezeichnungskarte_6x12mm - Designation cards 6x12mm

Various designation labels 6x12mm with different embossing.



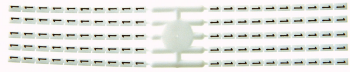
Bezeichnungskarte_6x9mm - Designation card 6x9mm

Various designation plates with different embossing.



Product data sheet

3452/10E - Terminal block DIN35 10mm² green yellow insulated



Bezeichnungskarte_6x3mm - Designation card 6x3mm

Various designation plates with different embossing.



3887/5 - Cover for 5 terminals yellow

with black printing, to series 3425,345210



3887/6 - Cover for 6 terminals yellow

with black printing, to series 3425,345210



3887/7 - Cover for 7 terminals yellow

with black printing, to series 3425,345210



3887/8 - Cover for 8 terminals yellow

with black printing, to series 3425,345210



Product data sheet

3452/10E - Terminal block DIN35 10mm² green yellow insulated

Product systems



Terminal blocks DIN35 2.5mm²-70mm²

DIN35 terminal blocks 2.5mm²-70mm² with best possible contacting, stainless steel screws, 4-digit marking option on both sides, recessed for cross-connections

