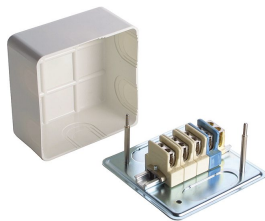




Product data sheet

2095C - Junction box, 95x95mm, 5x2.5mm²



Base plate made of sheet metal and cover made of thermosetting plastic, white, with terminals 3P N PE

Characteristics	
Eldas number	150075007
Base Unit	Piece
availability	Delivery according to agreement
EAN Code	7611718203701
group	167000
Packaging unit	10
country of origin	CH
Customs tariff number	8536.9080
Weight (g)	328 g
Technical data	
Hole spacing (mm)	77 mm
Dimensions length x width x height (mm)	95x95x46 mm
Cross section (mm²)	5x2.5 mm²



## **Product data sheet**

2095C - Junction box, 95x95mm, 5x2.5mm<sup>2</sup>

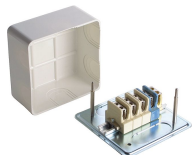
### **Product accessories**



## Product data sheet

2095C - Junction box, 95x95mm, 5x2.5mm<sup>2</sup>

### Product systems



**Junction boxes with base plate made of sheet metal and cover made of thermosetting plastic for 5x2.5 mm<sup>2</sup>**

- 5x2.5 mm<sup>2</sup>

