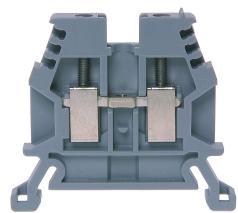




Product data sheet

30150BR - Terminal block DIN35 2.5mm² brown



Characteristics	
Eldas number	158100187
Base Unit	Piece
availability	Delivery according to agreement
EAN Code	7611718235474
group	165000
Packaging unit	50
country of origin	CH
Customs tariff number	8536.9080
Weight (g)	7 g
Color	brown
Technical data	
Dimensions length x width x height (mm)	45x5x36 mm
Dimensions length x width x height (inch)	1.77x0.20x1.41 inch
Cross section (mm²)	0,5 - 2,5 mm²
Nominal current (A)	24 A



Product data sheet

30150BR - Terminal block DIN35 2.5mm² brown

Rated voltage (V)	1000 V
Connection type	Screw terminal
DIN rail type	DIN-35
Smallest connectable section (mm ²)	0,5 mm ²
Number of connection point	2
Number of floor	1
Number of potentials	1
Clamping screw M	M2.5 (M = 0.6Nm)
Central thread M	M2.5 (M = 0.6Nm)
Insulating material	PA66
Nominal Cross-section (mm ²)	2,5 mm ²
Stripping length mm (mm)	10 mm
conductors of the same cross-section per clamping point EN60947 (mm ²)	2x1, 2x1.5, 2x2.5 mm ²
Head reception room width x height (mm)	2.4x5.2 mm
Rating data according to UL 1059	
Rated voltage US (V)	600 V
Nominal cross section (AWG)	14 AWG
Cross-section (AWG)	14 - 20 AWG
Smallest connectable section (AWG)	22 AWG
Stripping length (inch)	0,39 inch
Tightening torque (lb-inch)	5,3 lb-inch



Product data sheet

30150BR - Terminal block DIN35 2.5mm² brown

Product accessories



80247 - Test plug Ø 2.3mm red, socket 4mm
connecting cable incl.



80248 - Test plug Ø 2.3mm black, socket 4mm
connecting cable incl.



3460 - End barrier DIN35 grey to 3450, 30150
End wall suitable for 3450, 30150



3461 - Partition DIN35 grey to 30150,3450
Partition wall suitable for 30150, 3450, 30800, 30800P



80256 - Push-in barrier DIN35 to 30150, 3450
white



3418 - Stopper DIN35 height 30mm
Makrolon locking piece



30370 - Stopper DIN35 height 23mm
Locking piece made of nickel-plated brass M3 screw



81505/2 - Cross-connection 2-pole to DIN35/32 2.5mm² terminal blocks
Insulated cross-connection 2-pole to DIN32/35 terminal blocks including M2.5 screws.
Dimension: 9.1x18.8mm.



81505 - Cross connection bolt single M2.5 insulated (10.6mm)
Cross connection bolt complete with spacer sleeve. 10.6 mm



30408 - Link to cross-connections
to terminals 2.5mm 2



30790 - Cross-junction rack 10pole grey 5mm
Cross-connection rake made of nickel-plated brass, for terminal blocks 2.5mm² with 5mm pitch



Product data sheet

30150BR - Terminal block DIN35 2.5mm² brown



81401/4 - Cover for 4 terminals yellow

with black marking, to series 30150, 30903, 30973, 30860



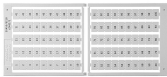
81440 - Sealing eyelet Ø 3.2mm

Sealing eyes



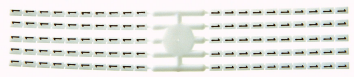
30421 - Cover strip for double level and terminal blocks 9.5mm, length 280mm

Cover strip for double level and terminal blocks DIN32/35 9.5mm , length 280mm



Bezeichnungskarte_5x5mm - Designation card 5x5mm

Various designation plates with different embossing.



Bezeichnungskarte_5x3mm - Designation card 5x3mm

Various designation plates with different embossing.



Bezeichnungskarte_5x9mm - Designation card 5x9mm

Various designation plates with different embossing.



Bezeichnungskarte_5x12mm - Designation card 5x12mm

Various designation plates



81401/5 - Cover for 5 terminals yellow

with black marking, to series 30150, 30903, 30973, 30860



81401/6 - Cover for 6 terminals yellow

with black marking, to series 30150, 30903, 30973, 30860



81401/7 - Cover for 7 terminals yellow

with black marking, to series 30150, 30903, 30973, 30860



81401/8 - Cover for 8 terminals yellow

with black marking, to series 30150, 30903, 30973, 30860



Product data sheet

30150BR - Terminal block DIN35 2.5mm² brown

Product systems



Terminal blocks DIN35 2.5mm²-70mm²

DIN35 terminal blocks 2.5mm²-70mm² with best possible contacting, stainless steel screws, 4-digit marking option on both sides, recessed for cross-connections

