



Product data sheet

4382R/3M - Profile rail C30 bare steel 3 m



Profile rail C30 with 29x15x2 mm made of bright steel, with a length of 3 m.

Characteristics	
Eldas number	168618239
Base Unit	Meter
availability	Delivery in 4 weeks
EAN Code	7611718248054
group	171000
Packaging unit	3
country of origin	CH
Customs tariff number	7216.9900
Weight (g)	950 g



## Product data sheet

4382R/3M - Profile rail C30 bare steel 3 m

### Product accessories



---

**4398 - Cable clamp for 1 cable 22-31mm**

Cable clamp black to screw on, two-piece, for 1 cable, 2 screws. Threaded bolt is M6x50.



---

**4398A - Cable clamp for 2 cables 22-31mm**

Cable clamp black to screw on, 4-piece, for 2 cables side by side, 2 screws. Threaded bolt is M6x110.

---



## Product data sheet

4382R/3M - Profile rail C30 bare steel 3 m

### Product systems



#### Profile rails C20 and C30

Various profile rails C20/C30 made of aluminum and steel VA2, against calculation of a cutting surcharge the profile rails can be delivered in any desired length. For embedding in concrete, the profile rails are available, also against calculation, with fixing holes or with slings.



#### Cable clamps for insertion in profile rails

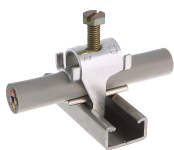
- made of impact-resistant Duroplast, black
- for insertion in profile rails no. 4382 and 4383
- with threaded bolt made of galvanized steel
- with welded slot nut
- handling like quick fit



#### Sliding blocks made of galvanized steel type C30

available in three versions:

- with screw, with spring
- without screw, with spring
- without screw, without spring
- Fits profile rails no. 4382, 4383 and 80291, type C30



#### Quick installer aluminum alloy for profile rail type C30

Aluminum alloy quick lay for profile rails type C30.

