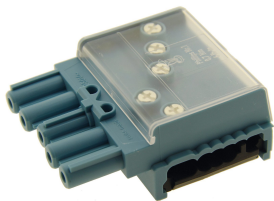




Product data sheet

49715D1 - Junction box Flat cable DALI 3G Bus 5P(Bus) C2 Q



with socket for heavy current and bus DALI to flat cable 3G2.5² + 2x1.5² Dali

Characteristics	
Eldas number	150780727
Base Unit	Piece
availability	available from stock
EAN Code	7611718271915
group	170000
Packaging unit	50
country of origin	CH
Customs tariff number	8536.9080
Weight (g)	65 g
Color	blue
Coding plug connection	Code 2
Technical data	
Box Type	Junction boxes
Fire load (KWh)	0,27 kWh
Dimensions length x width x height (mm)	54x57,5x25,7 mm



Product data sheet

49715D1 - Junction box Flat cable DALI 3G Bus 5P(Bus) C2 Q

Dimensions length x width x height (inch)	2,12x2,26x1,01 inch
Degree of protection	IP20, IP40 (Connected)
Metal parts	Corrosion protected
Flat cable contacting type	Piercing contact (screw)
Number of poles	3 pole bus 2 pole
Rated current heavy current part (A)	16 A
Rated voltage heavy current part (V)	250 V
Operating Temperature (°C)	-15 to 85 °C
Installation temperature min. (°C)	5 °C
Plastic parts	Halogen-free
Material hood	Polyamide
Number Screwdriver Pointed screws Heavy current part	1
Operating torque of pointed screws for heavy current section (Nm)	0,7 Nm



Product data sheet

49715D1 - Junction box Flat cable DALI 3G Bus 5P(Bus) C2 Q

Product accessories



49750 - Locking to connectors

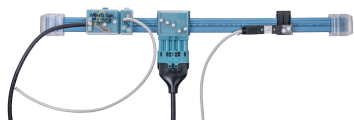
For mechanical connection of socket to plug 3 and 5 poles



Product data sheet

49715D1 - Junction box Flat cable DALI 3G Bus 5P(Bus) C2 Q

Product systems



Flat cable system Dali 3G2.5 2x1.5 mm²

This flexible system combines power current and Dali bus line in one cable application and is the basis for decentralized lighting control. The application areas are office and public buildings, industrial buildings, hotels but also modular buildings with a high degree of prefabrication.

