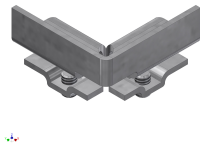




Product data sheet

53136 - Connecting lug AU BRK 90°-flat-connect.



Flat miter outside 90° type B for BRK 4670,4671,4183 and STK 4672

Characteristics	
Base Unit	Piece
availability	Delivery according to agreement
group	284000
Packaging unit	1
country of origin	CH
Weight (g)	57,8 g



Product data sheet

53136 - Connecting lug AU BRK 90°-flat-connect.

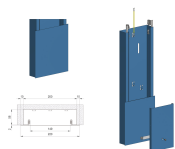
Product accessories



Product data sheet

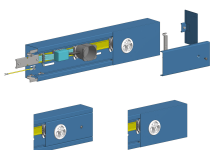
53136 - Connecting lug AU BRK 90°-flat-connect.

Product systems



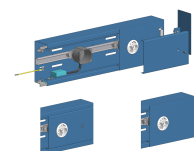
Riser channel system 4672 200x58

Riser channel 4672 200x58mm.



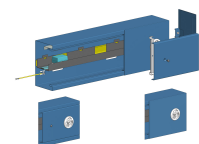
Parapet trunking system BRK 4671 140x79

Parapet trunking 4671 140x79mm - With DIN 35 rail - Made of galvanized sheet steel. Openings at the front



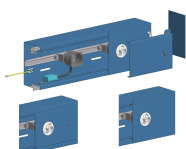
Parapet trunking system BRK 4670 182x85

Parapet channel 4670 182x85 mm - With stable anchor rail C30 for fastening with slot nut. - Made of galvanized sheet steel. Openings at the front.



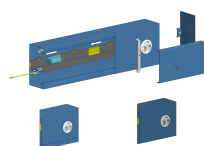
Parapet trunking system BRK 4183 200x115

Parapet trunking 4183 200x115 mm with DIN 35 rail - Made of galvanized sheet steel. Openings at the bottom.



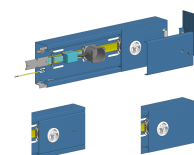
Parapet trunking system BRK 4670 200x115

Parapet channel 4670 200x115 mm. With stable anchor rail C30 for fastening with slot nut. - Made of galvanized sheet steel. Openings at the front.



Parapet trunking system BRK 4183 182x97

Parapet trunking 4183 182x97 mm with DIN 35 rail - Made of galvanized sheet steel. Openings at the bottom.



Parapet trunking system BRK 4671 182x79

Parapet trunking 4671 182x79 mm - With DIN 35 rail - Made of galvanized sheet steel. Openings at the front

