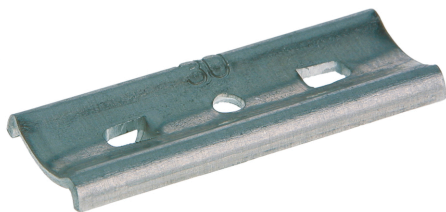




Product data sheet

43665 - Baseplate C20 16-20mm



of hardened aluminium alloy

Characteristics	
Eldas number	120191307
Base Unit	Piece
availability	Delivery in 4 weeks
EAN Code	7611718212574
group	171000
Packaging unit	100
country of origin	CH
Customs tariff number	761699
Weight (g)	3 g



Product data sheet

43665 - Baseplate C20 16-20mm

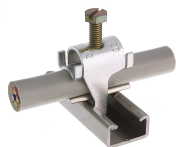
Product accessories



Product data sheet

43665 - Baseplate C20 16-20mm

Product systems



Quick installer aluminum alloy profile rail type C20



- Quick laying aluminum alloy for profile rail type C20.
 - With hexagon slotted screw.
 - For the laying of cables are always cable pads required
-