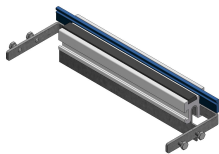




Product data sheet

52256 - End wall BOK 8880/200x50 with temporary protective edge



made of sendzimir-galvanized steel sheet 1.5mm with temporary protective edge pressed into special aluminum profile  
Woertz with temporary protective edge inserted into groove and impact sound trapezoidal rubber as cover supportincluding  
connecting material height 50mm / nominal cover width 200mm

Characteristics	
Base Unit	Piece
availability	Delivery according to agreement
group	282000
Packaging unit	1
country of origin	CH
Customs tariff number	7308.9000
Weight (g)	321 g
Technical data	
Nominal mass	200x50



## **Product data sheet**

52256 - End wall BOK 8880/200x50 with temporary protective edge

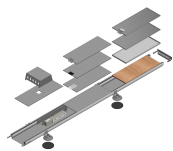
### **Product accessories**



Product data sheet

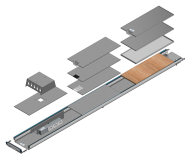
52256 - End wall BOK 8880/200x50 with temporary protective edge

Product systems



Floor channel BOK 8880 200x50mm on leveling device

Floor channel BOK 8880 200x50mm on leveling device.



Floor channel BOK 8880 200x50mm integrated leveling device

Floor channel BOK 8880 200x50mm with integrated leveling device

