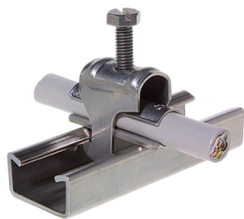




Product data sheet

43238 - Quick jig C30 56-64mm stainless steel



A4 stainless steel quick installers are immer cable pads are required for cable installation

Characteristics	
Eldas number	120126827
Base Unit	Piece
availability	available from stock
Packaging unit	25
Customs tariff number	8302.4990
Technical data	
Dimensions length x width x height (mm)	72x60 mm
Clampable diameter (mm)	56-64 mm



## Product data sheet

43238 - Quick jig C30 56-64mm stainless steel

### Product accessories



**43238U - Baseplate C30 56-64mm**

of stainless steel A4



## Product data sheet

43238 - Quick jig C30 56-64mm stainless steel

### Product systems

---



#### Quick stainless steel feeder type C30

Various stainless steel quick lay.

