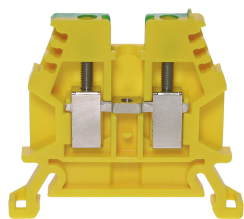




Product data sheet

30150E - Terminal block DIN35 2.5mm<sup>2</sup> 45x5x36mm green-yellow insulated



Terminal block DIN35 2.5mm<sup>2</sup> 45x5x36mm green-yellow insulated with best possible contacting, stainless steel screws, 4-digit marking possibility on both sides, recessed for cross-connections

Characteristics	
Eldas number	158100167
Base Unit	Piece
availability	available from stock
EAN Code	7611718220302
group	165000
Packaging unit	50
country of origin	CH
Customs tariff number	8536.9080
Weight (g)	7 g
Color	green/yellow
Technical data	
Dimensions length x width x height (mm)	45x5x36 mm
Dimensions length x width x height (inch)	1.77x0.20x1.41 inch
Cross section (mm <sup>2</sup> )	0,5 - 2,5 mm <sup>2</sup>
Nominal current (A)	24 A



## Product data sheet

### 30150E - Terminal block DIN35 2.5mm<sup>2</sup> 45x5x36mm green-yellow insulated

Rated voltage (V)	1000 V
Connection type	Screw terminal
DIN rail type	DIN-35
Smallest connectable section (mm <sup>2</sup> )	0,5 mm <sup>2</sup>
Number of connection point	2
Number of floor	1
Number of potentials	1
Clamping screw M	M2.5 (M = 0.6Nm)
Central thread M	M2.5 (M = 0.6Nm)
Insulating material	PA66
Nominal Cross-section (mm <sup>2</sup> )	2,5 mm <sup>2</sup>
Stripping length mm (mm)	10 mm
conductors of the same cross-section per clamping point EN60947 (mm <sup>2</sup> )	2x1, 2x1.5, 2x2.5 mm <sup>2</sup>
Head reception room width x height (mm)	2.4x5.2 mm
<b>Rating data according to UL 1059</b>	
Rated voltage US (V)	600 V
Nominal cross section (AWG)	14 AWG
Cross-section (AWG)	14 - 20 AWG
Smallest connectable section (AWG)	22 AWG
Stripping length (inch)	0,39 inch
Tightening torque (lb-inch)	5,3 lb-inch



## Product data sheet

30150E - Terminal block DIN35 2.5mm<sup>2</sup> 45x5x36mm green-yellow insulated

### Product accessories



**80247 - Test plug Ø 2.3mm red, socket 4mm**  
connecting cable incl.



**80248 - Test plug Ø 2.3mm black, socket 4mm**  
connecting cable incl.



**3460 - End barrier DIN35 grey to 3450, 30150**  
End wall suitable for 3450, 30150



**3461 - Partition DIN35 grey to 30150,3450**  
Partition wall suitable for 30150, 3450, 30800, 30800P



**80256 - Push-in barrier DIN35 to 30150, 3450**  
white



**3418 - Stopper DIN35 height 30mm**  
Makrolon locking piece



**30370 - Stopper DIN35 height 23mm**  
Locking piece made of nickel-plated brass M3 screw



**81505/2 - Cross-connection 2-pole to DIN35/32 2.5mm<sup>2</sup> terminal blocks**  
Insulated cross-connection 2-pole to DIN32/35 terminal blocks including M2.5 screws.  
Dimension: 9.1x18.8mm.



**81505 - Cross connection bolt single M2.5 insulated (10.6mm)**  
Cross connection bolt complete with spacer sleeve. 10.6 mm



**30408 - Link to cross-connections**  
to terminals 2.5mm 2



**30790 - Cross-junction rack 10pole grey 5mm**  
Cross-connection rake made of nickel-plated brass, for terminal blocks 2.5mm<sup>2</sup> with 5mm pitch



## Product data sheet

30150E - Terminal block DIN35 2.5mm<sup>2</sup> 45x5x36mm green-yellow insulated



### 81401/4 - Cover for 4 terminals yellow

with black marking, to series 30150, 30903, 30973, 30860



### 81440 - Sealing eyelet Ø 3.2mm

Sealing eyes



### 30421 - Cover strip for double level and terminal blocks 9.5mm, length 280mm

Cover strip for double level and terminal blocks DIN32/35 9.5mm, length 280mm



### 81505/3 - Cross-connection 3-pole to terminal blocks DIN32/35 2.5mm<sup>2</sup>

Insulated cross-connection 3-pole to DIN32/35 terminal blocks including M2 screws.  
Dimension: 5.14.2x18.8mm.



### 81505/4 - Cross-connection 4-pole to terminal blocks DIN32/35 2.5mm<sup>2</sup>

Insulated cross-connection 4-pole to terminal blocks DIN32/35 2.5mm<sup>2</sup> including screws M2.5. dimension: 19.3x18.8mm.



### 81505/5 - Cross-connection 5-pole to DIN32/35 2.5mm<sup>2</sup> terminal blocks

Insulated cross-connections 5-pole to DIN32/35 terminal blocks including M2.5 screws.  
Dimension: 24.4x18.8mm.



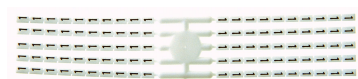
### 81505/10 - Cross-connection 10-pole to DIN32/35 2.5mm<sup>2</sup> terminal blocks

Insulated cross-connection 10-pole to terminal blocks DIN32/35 2.5mm<sup>2</sup> including screws M2.5. dimension: 49.7x18.8mm.



### Bezeichnungskarte\_5x5mm - Designation card 5x5mm

Various designation plates with different embossing.



### Bezeichnungskarte\_5x3mm - Designation card 5x3mm

Various designation plates with different embossing.



### Bezeichnungskarte\_5x9mm - Designation card 5x9mm

Various designation plates with different embossing.



### Bezeichnungskarte\_5x12mm - Designation card 5x12mm

Various designation plates



## Product data sheet

30150E - Terminal block DIN35 2.5mm<sup>2</sup> 45x5x36mm green-yellow insulated

### Product systems



#### Terminal blocks DIN35 2.5mm<sup>2</sup>-70mm<sup>2</sup>

DIN35 terminal blocks 2.5mm<sup>2</sup>-70mm<sup>2</sup> with best possible contacting, stainless steel screws, 4-digit marking option on both sides, recessed for cross-connections

