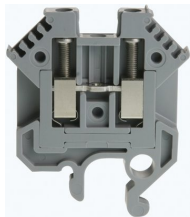




Product data sheet

30111GR - Terminal block DIN32 2.5mm² 46x6x41mm gray



Terminal block DIN32 2.5mm² 46x6x41mm grey with best possible contacting, stainless steel screws and springs, 4-digit marking option on both sides, recessed for cross-connections

Characteristics	
Eldas number	158690337
Base Unit	Piece
availability	Delivery in 4 weeks
EAN Code	7611718200533
group	165000
Packaging unit	50
country of origin	CH
Customs tariff number	8536.9080
Weight (g)	10,6 g
Color	gray
Technical data	
Dimensions length x width x height (mm)	46x6x41 mm
Dimensions length x width x height (inch)	1.81x0.24x1.61 inch
Cross section (mm²)	0,5 - 2,5 mm²
Nominal current (A)	24 A



Product data sheet

30111GR - Terminal block DIN32 2.5mm² 46x6x41mm gray

Rated voltage (V)	1000 V
Connection type	Screw terminal
DIN rail type	DIN-32
Number of connection point	2
Number of floor	1
Number of potentials	1
Clamping screw M	M3
Insulating material	PA66
Nominal Cross-section (mm²)	2,5 mm²
Stripping length mm (mm)	10 mm
Head reception room width x height (mm)	3.2x4.2 mm
Rating data according to UL 1059	
Rated voltage US (V)	600 V
Nominal cross section (AWG)	14 AWG
Cross-section (AWG)	14 - 20 AWG
Stripping length (inch)	0,39 inch



## Product data sheet

30111GR - Terminal block DIN32 2.5mm<sup>2</sup> 46x6x41mm gray

### Product accessories



**80247 - Test plug Ø 2.3mm red, socket 4mm**

connecting cable incl.



**80248 - Test plug Ø 2.3mm black, socket 4mm**

connecting cable incl.



**Bezeichnungskarte\_6x12mm - Designation cards 6x12mm**

Various designation labels 6x12mm with different embossing.



**Bezeichnungskarte\_6x9mm - Designation card 6x9mm**

Various designation plates with different embossing.



**Bezeichnungskarte\_6x3mm - Designation card 6x3mm**

Various designation plates with different embossing.



**3651GR - Partition DIN32 grey to 30111,3301,3302**

for 30111,3301,3302



**3758 - Stopper DIN32 height 30mm**

from polyamide gray



**3749 - Stopper DIN32 height 28mm**

of anticorodal



**81427 - Cover for 4 terminals yellow**

with black printing, to series 30128



**81440 - Sealing eyelet Ø 3.2mm**

Sealing eyes



**30421 - Cover strip for double level and terminal blocks 9.5mm, length 280mm**

Cover strip for double level and terminal blocks DIN32/35 9.5mm , length 280mm



## Product data sheet

30111GR - Terminal block DIN32 2.5mm<sup>2</sup> 46x6x41mm gray



### 81506/10 - Cross-connection 10-pole to terminals DIN32/35 4mm<sup>2</sup>

Insulated cross-connections 10-pole to terminals DIN32/35 4mm<sup>2</sup> including M3 screws.  
Standard version. Dimension: 59.9x20.8 mm



### 81506/2 - Cross-connection 2-pole to terminals DIN32/35 4mm<sup>2</sup>

Insulated cross-connection 2-pole to terminals DIN32/35 4mm<sup>2</sup> including screws M3.  
Standard version. Dimension: 11.1x20.8 mm



### 81506/3 - Cross-connection 3-pole to terminals DIN32/35 4mm<sup>2</sup>

Insulated cross-connection 3-pole to terminals DIN32/35 4mm<sup>2</sup> including screws M3.  
Standard version. Dimension: 17.2x20.8 mm



### 81506 - Cross connection bolt single M3 insulated (10.6 mm)

Cross-connection bolt complete with spacer sleeve. Standard version. Dimension: 10.6 mm



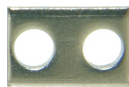
### 81506/5 - Cross-connection 5-pole to terminals DIN32/35 4mm<sup>2</sup>

Insulated cross-connection 5-pole to terminals DIN32/35 4mm<sup>2</sup> including screws M3.  
Standard version. Dimension: 29.4x20.8 mm



### 81506/4 - Cross-connection 4-pole to terminals DIN32/35 4mm<sup>2</sup>

Insulated cross-connection 4-pole to terminals DIN32/35 4mm<sup>2</sup> including screws M3.  
Standard version. Dimension: 23.3x20.8 mm



### 81410L - Link to cross-connections

Connecting lug to terminals 4mm<sup>2</sup>. Dimension: 11.1x8 mm



## Product data sheet

30111GR - Terminal block DIN32 2.5mm<sup>2</sup> 46x6x41mm gray

## Product systems



### Terminal blocks DIN32 2.5mm<sup>2</sup>-70mm<sup>2</sup>

Various terminal blocks DIN32 2.5mm<sup>2</sup>-70mm<sup>2</sup>.

