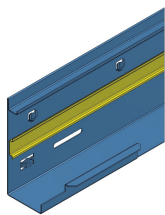




Product data sheet

59441 - Channel shell FnW KOK 200x120



made of sendzimir-galvanized steel sheet 1.5mm with DIN-35 rail  
with 4xFLF 3/5 and 1xFLF 6/5 pre-punching per meter in the channel tray bottom  
including connecting material and ground wire  
color: at choice  
length: 2000mm

Characteristics	
Base Unit	Piece
availability	Delivery according to agreement
group	284000
Packaging unit	1
country of origin	CH
Customs tariff number	7308.9000
Technical data	
Nominal mass	200x120



## **Product data sheet**

59441 - Channel shell FnW KOK 200x120

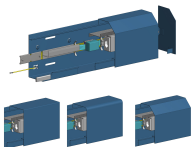
### **Product accessories**



Product data sheet

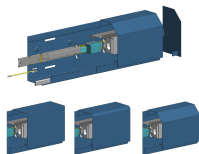
59441 - Channel shell FnW KOK 200x120

Product systems



Combination trunking system KOK 200x120

Combination duct KOK 200x120 mm.



Combination trunking system KOK 200x120 as base trunking

Combination trunking KOK 200x120 mm as base trunking. With suspension cover.

