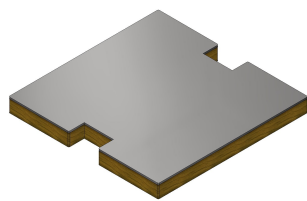




Product data sheet

51566 - Cr lid visible BAK/DAK 22 KM



made of chrome steel V2A 3mm , visible side ground grain 220,
glued to wood raw chipboard V100 22mm.
Dimension: 271x271x25mm

Characteristics	
Base Unit	Piece
availability	Delivery according to agreement
group	282000
Packaging unit	1
country of origin	CH
Customs tariff number	7308.9000
Weight (g)	2770 g



Product data sheet

51566 - Cr lid visible BAK/DAK 22 KM

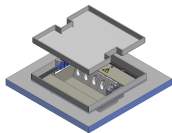
Product accessories



Product data sheet

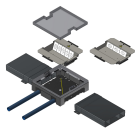
51566 - Cr lid visible BAK/DAK 22 KM

Product systems



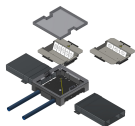
DAK22 271x271 square

Raised floor system DAK22 271x271 square.



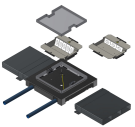
Floor junction box BAK22 200x40

Underfloor system with square plenum box and chrome steel and aluminum junction boxes, edge height 22mm for UFK 200x40 underfloor duct.



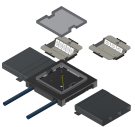
Floor junction box BAK22 200x50

Underfloor system with square plenum box and chrome steel and aluminum junction boxes, edge height 22mm for UFK 200x50 underfloor duct.



Floor junction box BAK22 300x40

Underfloor system with square plenum box and chrome steel and aluminum junction boxes, edge height 22mm for UFK 300x40 underfloor duct.



Floor junction box BAK22 300x50

Underfloor system with square plenum box and chrome steel and aluminum junction boxes, edge height 22mm for UFK 300x50 underfloor duct.

