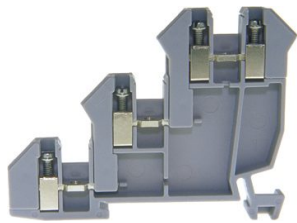




Product data sheet

30400 - Three-pin initiator terminal DIN35 2.5mm² (4 clamping points)



Three-pole initiator terminal DIN35 2.5mm² for power supply with 4 terminal points.

| Characteristics | |
|---|---------------------------------|
| Eldas number | 158601937 |
| Base Unit | Piece |
| availability | Delivery according to agreement |
| EAN Code | 7611718200175 |
| group | 165000 |
| Packaging unit | 50 |
| country of origin | CH |
| Customs tariff number | 8536.9080 |
| Weight (g) | 10 g |
| Color | gray |
| Technical data | |
| Dimensions length x width x height (mm) | 65x5.08x44 mm |
| Dimensions length x width x height (inch) | 2.56x0.20x1.73 inch |
| Cross section (mm²) | 1 - 2,5 mm² |
| Nominal current (A) | 24 A |



Product data sheet

30400 - Three-pin initiator terminal DIN35 2.5mm² (4 clamping points)

| | |
|--|---------------------|
| Rated voltage (V) | 250 V |
| Connection type | Screw terminal |
| DIN rail type | DIN-35 |
| Number of connection point | 4 |
| Number of floor | 3 |
| Number of potentials | 3 |
| Clamping screw M | M2.5 |
| Insulating material | PA66 |
| Nominal Cross-section (mm ²) | 2,5 mm ² |
| Stripping length mm (mm) | 7 mm |
| Head reception room width x height (mm) | 2.4x3 mm |
| Rating data according to UL 1059 | |
| Rated voltage US (V) | 300 V |
| Nominal cross section (AWG) | 14 AWG |
| Cross-section (AWG) | 14 - 18 AWG |
| Stripping length (inch) | 0,28 inch |



Product data sheet

30400 - Three-pin initiator terminal DIN35 2.5mm² (4 clamping points)

Product accessories



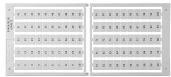
80247 - Test plug Ø 2.3mm red, socket 4mm

connecting cable incl.



80248 - Test plug Ø 2.3mm black, socket 4mm

connecting cable incl.



Bezeichnungskarte_5x5mm - Designation card 5x5mm

Various designation plates with different embossing.



30406 - End barrier DIN35 grey to 30400

End wall suitable for 30400



3418 - Stopper DIN35 height 30mm

Makrolon locking piece



81535/2 - Cross-connection 2-pole to three-pin initiator terminal blocks DIN35 2.5mm²

Insulated cross-connection 2-pole to three-pole initiator terminals DIN35 2.5mm² including screws M2.5. dimension: 9.1x11.4 mm



81535/3 - Cross-connection 3-pole to three-pin initiator terminal DIN35 2.5mm²

Insulated cross-connections to three-pin initiator terminal DIN35 2.5mm² including screws M2.5. dimension: 14.2x11.4 mm



81535/4 - Cross-connection 4-pole to three-pin initiator terminal blocks DIN35 2.5mm²

Insulated cross-connection 4-pole to three-pin initiator terminal DIN35 2.5mm² including screws M2.5. dimension: 19.3x11.4 mm



81535/5 - Cross-connection 5-pole to three-pin initiator terminal blocks DIN35 2.5mm²

Insulated cross-connection 5-pole to three-pin initiator terminals DIN35 2.5mm² including screws M2.5. dimension: 24.4x11.4 mm



81535/10 - Cross-connection 10-pole to three-pin initiator terminals DIN35 2.5mm²

Insulated cross-connection 10-pole to three-pin initiator terminal DIN35 2.5mm² including screws M2.5. dimension: 49.7x11.4 mm



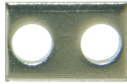
81535 - Cross connection bolt single M2.5 insulated (4.1 mm)

Cross connection bolt complete with spacer sleeve. 4.1 mm



Product data sheet

30400 - Three-pin initiator terminal DIN35 2.5mm² (4 clamping points)



30408 - Link to cross-connections

to terminals 2.5mm 2



30413RO - Cross-junction rack 20pole red 5.08mm

to 3-step terminals f. proximity switches and Snapline



30413BL - Cross-junction rack 20pole blue 5.08mm

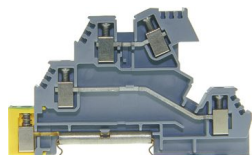
to 3-step terminals f. proximity switches and Snapline



Product data sheet

30400 - Three-pin initiator terminal DIN35 2.5mm² (4 clamping points)

Product systems



Three-stud installation clamps DIN 35

Various three-stud installation clamps.

