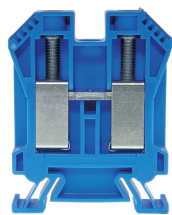




Product data sheet

3428BL - Terminal block DIN35 50mm² blue



Characteristics	
Eldas number	158120757
Base Unit	Piece
availability	Delivery according to agreement
EAN Code	7611718205545
group	165000
Packaging unit	20
country of origin	CH
Customs tariff number	8536.9080
Weight (g)	68 g
Color	blue
Technical data	
Dimensions length x width x height (mm)	60x14x71 mm
Dimensions length x width x height (inch)	2.36x0.55x2.80 inch
Cross section (mm²)	2,5 - 50 mm²
Nominal current (A)	125 A



## Product data sheet

### 3428BL - Terminal block DIN35 50mm<sup>2</sup> blue

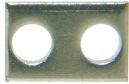
Rated voltage (V)	1000 V
Connection type	Screw terminal
DIN rail type	DIN-35
Smallest connectable section (mm <sup>2</sup> )	2,5 mm <sup>2</sup>
Number of connection point	2
Number of floor	1
Number of potentials	1
Clamping screw M	M6 (M = 2.5Nm)
Central thread M	M4 (M = 1.5Nm)
Insulating material	PA66
Nominal Cross-section (mm <sup>2</sup> )	50 mm <sup>2</sup>
Stripping length mm (mm)	17 mm
conductors of the same cross-section per clamping point EN60947 (mm <sup>2</sup> )	1x50 , 2x35 , 2x25 mm <sup>2</sup>
Head reception room width x height (mm)	9.6x14.6 mm
<b>Rating data according to UL 1059</b>	
Rated voltage US (V)	600 V
Nominal cross section (AWG)	1 AWG
Cross-section (AWG)	1 - 14 AWG
Smallest connectable section (AWG)	14 AWG
Stripping length (inch)	0,67 inch
Tightening torque (lb-inch)	22,1 lb-inch



## Product data sheet

3428BL - Terminal block DIN35 50mm<sup>2</sup> blue

### Product accessories



#### 81415L - Link to cross-connections

to terminals 35mm 2



#### 81504/2 - Cross-connection 2-pole to DIN32/35 50mm<sup>2</sup> terminal blocks

Insulated cross-connection 2-pole to terminal blocks DIN32/35 50mm<sup>2</sup> including screws M4.  
Dimension: 26.1x35.8 mm



#### 81504/3 - Cross-connection 3-pole to DIN32/35 50mm<sup>2</sup> terminal blocks

Insulated cross-connection 3-pole to terminal blocks DIN32/35 50mm<sup>2</sup> including screws M4.  
Dimension: 40.2x35.8 mm



#### 81504/4 - Cross-connection 4-pole to DIN32/35 50mm<sup>2</sup> terminal blocks

Insulated cross-connection 4-pole to terminal blocks DIN32/35 50mm<sup>2</sup> including screws M4.  
Dimension: 54.3x35.8 mm



#### 81504/5 - Cross-connection 5-pole to DIN32/35 50mm<sup>2</sup> terminal blocks

Insulated cross-connection 5-pole to terminal blocks DIN32/35 50mm<sup>2</sup> including screws M4.  
Dimension: 68.4x35.8 mm



#### 81504/10 - Cross-connection 10-pole to DIN32/35 50mm<sup>2</sup> terminal blocks

Insulated cross-connection 10-pole to DIN32/35 50mm<sup>2</sup> terminal blocks including M4 screws.  
Dimension: 138.9x35.8 mm



#### 81504 - Cross connection bolt single M4 insulated (20 mm)

Cross connection bolt complete with spacer sleeve. 20 mm



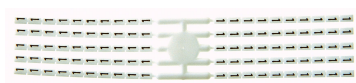
#### Bezeichnungskarte\_6x12mm - Designation cards 6x12mm

Various designation labels 6x12mm with different embossing.



#### Bezeichnungskarte\_6x9mm - Designation card 6x9mm

Various designation plates with different embossing.



#### Bezeichnungskarte\_6x3mm - Designation card 6x3mm

Various designation plates with different embossing.



#### 80071R - Test plug Ø M4 red, socket 4mm

plug and adaptor in one piece



## Product data sheet

3428BL - Terminal block DIN35 50mm<sup>2</sup> blue



### 3519 - End barrier DIN35 grey to 3428

End wall suitable for 3428



### 3509 - Partition DIN35 grey to 3428

Partition wall suitable for 3428



### 3418 - Stopper DIN35 height 30mm

Makrolon locking piece



### 30370 - Stopper DIN35 height 23mm

Locking piece made of nickel-plated brass M3 screw



### 30199 - Stopper DIN35 height 50mm

Aluminum alloy locking piece



### 3869/4 - Cover for 4 terminals yellow

with black printing, to series 3428



### 3869/5 - Cover for 5 terminals yellow

with black printing, to series 3428



### 3869/6 - Cover for 6 terminals yellow

with black printing, to series 3428



### 3869/7 - Cover for 7 terminals yellow

with black printing, to series 3428



### 3869/8 - Cover for 8 terminals yellow

with black printing, to series 3428



### 81441 - Sealing eyelet Ø 4.2mm

Sealing eyes



## Product data sheet

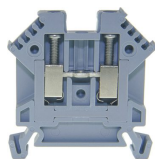
3428BL - Terminal block DIN35 50mm<sup>2</sup> blue

### Product systems



#### Terminal blocks DIN35 2.5mm<sup>2</sup>-70mm<sup>2</sup>

DIN35 terminal blocks 2.5mm<sup>2</sup>-70mm<sup>2</sup> with best possible contacting, stainless steel screws, 4-digit marking option on both sides, recessed for cross-connections



#### Terminal blocks for high demands DIN35

Terminal blocks for high demands DIN35 with best possible contacting, stainless steel screws, 4-digit marking possibility on both sides, recessed for cross connections

