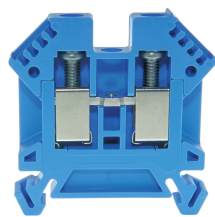




Product data sheet

3425BL - Terminal block DIN35 6mm² 49x8x45mm blue



Terminal block DIN35 6mm² 49x8x45mm blue with best possible contacting, stainless steel screws, 4-digit marking possibility on both sides, recessed for cross-connections

Characteristics	
Eldas number	158120357
Base Unit	Piece
availability	Delivery in 4 weeks
EAN Code	7611718202490
group	165000
Packaging unit	50
country of origin	CH
Customs tariff number	8536.9080
Weight (g)	19 g
Color	blue
Technical data	
Dimensions length x width x height (mm)	49x8x45 mm
Dimensions length x width x height (inch)	1.93x0.32x1.77 inch
Cross section (mm²)	0,5 - 6 mm²
Nominal current (A)	41 A



## Product data sheet

### 3425BL - Terminal block DIN35 6mm<sup>2</sup> 49x8x45mm blue

Rated voltage (V)	1000 V
Connection type	Screw terminal
DIN rail type	DIN-35
Smallest connectable section (mm <sup>2</sup> )	0,5 mm <sup>2</sup>
Number of connection point	2
Number of floor	1
Number of potentials	1
Clamping screw M	M4 (M = 1.5Nm)
Central thread M	M3 (M = 0.7Nm)
Insulating material	PA66
Nominal Cross-section (mm <sup>2</sup> )	6 mm <sup>2</sup>
Stripping length mm (mm)	11 mm
conductors of the same cross-section per clamping point EN60947 (mm <sup>2</sup> )	1x6 , 2x4 , 2x2.5 mm <sup>2</sup>
Head reception room width x height (mm)	4.5x6 mm
<b>Rating data according to UL 1059</b>	
Rated voltage US (V)	600 V
Nominal cross section (AWG)	10 AWG
Cross-section (AWG)	10 - 20 AWG
Smallest connectable section (AWG)	20 AWG
Stripping length (inch)	0,43 inch
Tightening torque (lb-inch)	13,3 lb-inch



## Product data sheet

3425BL - Terminal block DIN35 6mm<sup>2</sup> 49x8x45mm blue

### Product accessories



#### 81548/2 - Cross-connection 2-pole to terminal blocks 6mm<sup>2</sup> for high demands

Insulated cross-connection for high demands 2-pole to terminal blocks 6mm<sup>2</sup> including screws M3. Dimension: 15.1x20.8 mm



#### 81548/3 - Cross-connection 3-pole to DIN35 6mm<sup>2</sup> terminal blocks for high demands

Insulated cross-connection for high demands 3-pole to terminal blocks DIN35 6mm<sup>2</sup> including screws M3. Dimension: 23.2x20.8 mm



#### 81548/4 - Cross-connection 4-pole to terminal blocks 6mm<sup>2</sup> for high demands

Insulated cross-connection for high demands 4-pole to terminal blocks 6mm<sup>2</sup> including screws M3. Dimension: 31.3x20.8 mm



#### 81548/5 - Cross-connection 5-pole to DIN35 6mm<sup>2</sup> terminal blocks for high demands

Insulated cross-connection for high demands 5-pole to DIN35 6mm<sup>2</sup> terminal blocks including M3 screws. Dimension: 39.4x20.8 mm



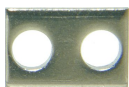
#### 81548/10 - Cross-connection 10-pole to terminals 6mm<sup>2</sup> for high demands

Insulated cross-connection 10-pole to DIN35 6mm<sup>2</sup> terminal blocks including M3 screws. Dimension: 79.9x20.8 mm



#### 81548 - Cross connection bolt single M3 insulated for high demands (11,5 mm)

Cross-connection bolt complete with spacer sleeve to terminal blocks for high demands. Dimension: 11.5 mm



#### 81412L - Link to cross-connections

to terminals 6 und 10mm 2



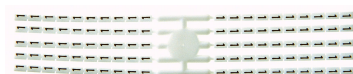
#### Bezeichnungskarte\_6x12mm - Designation cards 6x12mm

Various designation labels 6x12mm with different embossing.



#### Bezeichnungskarte\_6x9mm - Designation card 6x9mm

Various designation plates with different embossing.



#### Bezeichnungskarte\_6x3mm - Designation card 6x3mm

Various designation plates with different embossing.



## Product data sheet

3425BL - Terminal block DIN35 6mm<sup>2</sup> 49x8x45mm blue



**30792 - Cross-junction rack 10pole grey 8mm**

to terminals with 6mm pin spacing



**80070R - Test plug Ø M3 red, socket 4mm**

plug and adaptor in one piece



**2737R - Test plug Ø 2.8mm red, socket 4mm**

connecting cable incl.



**3516 - End barrier DIN35 grey to 3424, 3425**

End wall suitable for 3424, 3425



**3506 - Partition DIN35 grey to 30128, 3424**

Partition wall suitable for 3424, 3425, 30123, 30124, 30127, 30128, 30130



**80255 - Push-in barrier DIN35 to 30128, 3424,**

to 3425, 30138, 30137, white



**30422 - Cover strip for terminal blocks 9.5mm, length 280mm**

Cover strip for terminal blocks DIN32/35 9.5mm , length 280mm



**3418 - Stopper DIN35 height 30mm**

Makrolon locking piece



**30370 - Stopper DIN35 height 23mm**

Locking piece made of nickel-plated brass M3 screw



**30199 - Stopper DIN35 height 50mm**

Aluminum alloy locking piece



**3887/4 - Cover for 4 terminals yellow**

with black printing, to series 3425,345210



**3887/5 - Cover for 5 terminals yellow**

with black printing, to series 3425,345210



## Product data sheet

3425BL - Terminal block DIN35 6mm<sup>2</sup> 49x8x45mm blue



### **3887/6 - Cover for 6 terminals yellow**

with black printing, to series 3425,345210



### **3887/7 - Cover for 7 terminals yellow**

with black printing, to series 3425,345210



### **3887/8 - Cover for 8 terminals yellow**

with black printing, to series 3425,345210



### **81440 - Sealing eyelet Ø 3.2mm**

Sealing eyes



### **3512 - Sealing screw M3x25 of polyamide**

Sealing screw spring-loaded test probes, several numbers of poles can be lined up

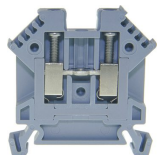


## Product data sheet

3425BL - Terminal block DIN35 6mm<sup>2</sup> 49x8x45mm blue

### Product systems

---



#### Terminal blocks for high demands DIN35

Terminal blocks for high demands DIN35 with best possible contacting, stainless steel screws, 4-digit marking possibility on both sides, recessed for cross connections

