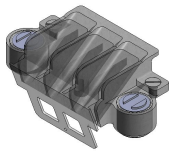




Product data sheet

51518 - Cable trough complete DAK 8825 / BAK4



made of polycarbonate crystal clear with transparent filling piece

Characteristics	
Base Unit	Piece
availability	Delivery according to agreement
EAN Code	7611718220838
group	282000
Packaging unit	1
country of origin	CH
Customs tariff number	3926.9000



Product data sheet

51518 - Cable trough complete DAK 8825 / BAK4

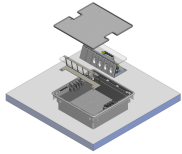
Product accessories



Product data sheet

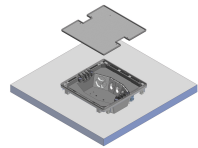
51518 - Cable trough complete DAK 8825 / BAK4

Product systems



DAK 8825 280x280 square with built-in housing

Raised floor system DAK 8825 280x280 square with built-in housing.



DAK 8825 280x280 square with mounting tray

Raised floor system DAK 8825 280x280 square with built-in tray.



Floor junction box BAK4 to slab formwork

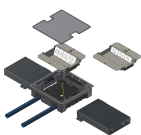
Plenum box BAK4 for fastening to the slab formwork.

The installation of underfloor ducts requires a minimum height of the concrete cover (60mm). If this height is not available, special boxes can be obtained for concreting into the raw slab. After fastening to the formwork, they are connected to each other with underfloor trunking 200 x 40, covered with the temporary protective cover and poured into the concrete up to the top edge.

The installation kit is mounted on the levelable box insert; the opening between the box bottom and the installation plate allows the cable to pass through to the next box. After finished wiring, an aluminum cover with cable trough is attached.

Connection box consisting of:

- Enclosure with adjustable feet, with four side openings 202 x 42 mm and a bottom entry tube M50 with temporary one-way steel cover incl. 4 screws
- Enclosure insert made of aluminum, with frame 304 x 304
- Aluminum lid with edge height 4 mm
- 2 cable trays made of polycarbonate crystal clear with transparent filler piece



Floor junction box BAK4 200x30

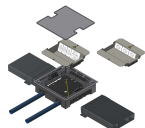
Underfloor system with square plenum box and aluminum junction boxes, edge height 4mm for UFK 200x30 underfloor duct.





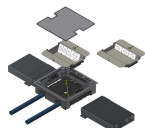
Product data sheet

51518 - Cable trough complete DAK 8825 / BAK4



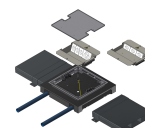
Floor junction box BAK4 200x40

Underfloor system with square plenum box and aluminum junction boxes, edge height 4mm for UFK 200x40 underfloor duct.



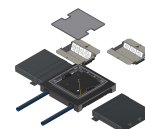
Floor junction box BAK4 200x50

Underfloor system with square plenum box and aluminum junction boxes, edge height 4mm for UFK 200x50 underfloor duct.



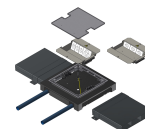
Floor junction box BAK4 300x30

Underfloor system with square plenum box and aluminum junction boxes, edge height 4mm for UFK 300x30 underfloor duct.



Floor junction box BAK4 300x40

Underfloor system with square plenum box and aluminum junction boxes, edge height 4mm for UFK 300x40 underfloor duct.



Floor junction box BAK4 300x50

Underfloor system with square plenum box and aluminum junction boxes, edge height 4mm for UFK 300x50 underfloor duct.

