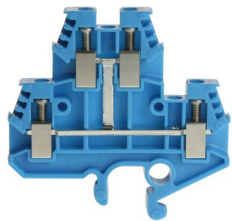




Product data sheet

3880/1PBL - Double level terminal DIN32 4mm² blue (1 potential)



Double level clamp DIN32 4mm² blue (1 potential) with stainless steel screws, recessed for cross connections, 2x3-digit marking possibility on both sides.

Characteristics	
Eldas number	158202057
Base Unit	Piece
availability	Delivery according to agreement
EAN Code	7611718206214
group	165000
Packaging unit	50
country of origin	CH
Customs tariff number	8536.9080
Weight (g)	17,5 g
Color	blue

Technical data	
Dimensions length x width x height (mm)	62x6x48 mm
Dimensions length x width x height (inch)	2.44x0.24x1.89 inch
Cross section (mm²)	0,5 - 4 mm²
Nominal current (A)	20 A



Product data sheet

3880/1PBL - Double level terminal DIN32 4mm² blue (1 potential)

Rated voltage (V)	500 V
Connection type	Screw terminal
DIN rail type	DIN-32
Number of connection point	4
Number of floor	2
Number of potentials	1
Clamping screw M	M3
Insulating material	PA66
Nominal Cross-section (mm²)	4 mm²
Stripping length mm (mm)	10 mm
Head reception room width x height (mm)	3.2x5 mm
Rating data according to UL 1059	
Rated voltage US (V)	300 V
Nominal cross section (AWG)	12 AWG
Cross-section (AWG)	12 - 20 AWG
Stripping length (inch)	0,39 inch



## Product data sheet

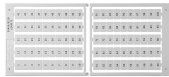
3880/1PBL - Double level terminal DIN32 4mm<sup>2</sup> blue (1 potential)

### Product accessories



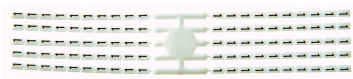
#### 80222/6 - Test adaptor to terminal series 3450 2 spiral springs

with hole for strands up to 0.75mm 2



#### Bezeichnungskarte\_6x9mm - Designation card 6x9mm

Various designation plates with different embossing.



#### Bezeichnungskarte\_6x3mm - Designation card 6x3mm

Various designation plates with different embossing.



#### 81526/2 - Cross-connection 2pole to terminal 2.5mm<sup>2</sup>/4mm<sup>2</sup>

Cross connections complete with M3 screws. 11.1x17.8 mm



#### 81526/3 - Cross-connection 3-pole to terminals DIN15/32/35 2.5mm<sup>2</sup>/4mm<sup>2</sup>

Insulated cross-connection 3-pole to terminals DIN15/32/35 2.5mm<sup>2</sup>/4mm<sup>2</sup> including screws M3. Dimension: 17.2x17.8 mm



#### 81526/4 - Cross-connection 4-pole to terminals DIN15/32/35 2.5mm<sup>2</sup>/4mm<sup>2</sup>

Insulated cross-connection 4-pole to terminals DIN15/32/35 2.5mm<sup>2</sup>/4mm<sup>2</sup> including screws M3. Dimension: 23.3x17.8 mm



#### 81526/5 - Cross-connection 5-pole to terminals DIN15/32/35 2.5mm<sup>2</sup>/4mm<sup>2</sup>

Insulated cross-connection 5-pole to terminals DIN15/32/35 2.5mm<sup>2</sup>/4mm<sup>2</sup> including screws M3. Dimension: 29.4x17.8 mm



#### 81526/10 - Cross-connection 10-pole to terminals DIN15/32/35 2.5mm<sup>2</sup>/4mm<sup>2</sup>

Insulated cross-connection 10-pole to terminals DIN15/32/35 2.5mm<sup>2</sup>/4mm<sup>2</sup> including screws M3. Dimension: 59.9x17.8 mm



#### 81526 - Cross connection bolt single M3, insulated (9.1 mm)

Cross connection bolt complete with spacer sleeve. 9.1 mm



#### 30441 - Link to cross-connections

to terminals 4mm 2



#### 3894/4 - Cover for 4 terminals yellow

with black printing, to series 3430



## Product data sheet

3880/1PBL - Double level terminal DIN32 4mm<sup>2</sup> blue (1 potential)



### **3894/5 - Cover for 5 terminals yellow**

with black printing, to series 3430



### **3894/6 - Cover for 6 terminals yellow**

with black printing, to series 3430



### **3894/7 - Cover for 7 terminals yellow**

with black printing, to series 3430



### **3894/8 - Cover for 8 terminals yellow**

with black printing, to series 3430



### **81440 - Sealing eyelet Ø 3.2mm**

Sealing eyes



### **3512 - Sealing screw M3x25 of polyamide**

Sealing screw spring-loaded test probes, several numbers of poles can be lined up



### **30421 - Cover strip for double level and terminal blocks 9.5mm, length 280mm**

Cover strip for double level and terminal blocks DIN32/35 9.5mm , length 280mm



## Product data sheet

3880/1PBL - Double level terminal DIN32 4mm<sup>2</sup> blue (1 potential)

### Product systems

---

**Double level terminals 1-pole DIN32**

Various double level terminals 1-pole DIN32

